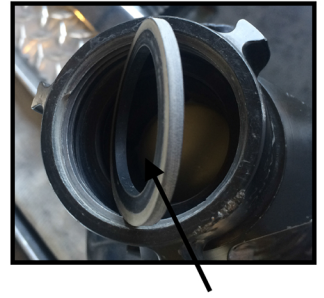


Back to Basics

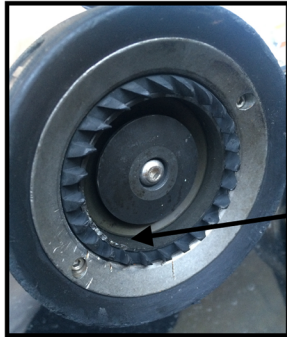
Know Your Nozzle



Nozzles vary but all come back to two basic designs, smooth bore and combination/fog, understand the advantages and limitations of each



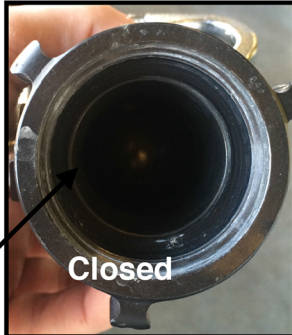
Make sure gasket is flexible and not dry rotted



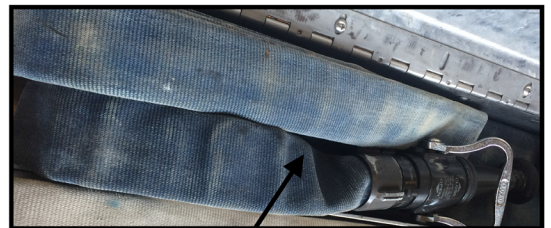
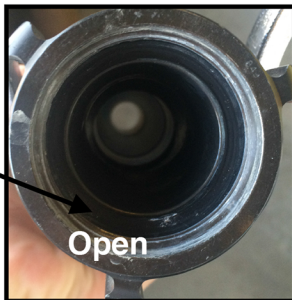
Check the teeth; broken teeth will produce an ineffective pattern and hinder operations



Check the bale, make sure it is free of cracks and is tight to the nozzle, ensure that it operates the interior valve by opening and closing the bale and looking to see that the valve actuates



Check your flow, is your GPM correct for your intended pump pressure? Which way does the nozzle need to turn for fog? For straight stream?



The best way to check your nozzle is to pull the line and flow it, this is a definitive way to ensure that nozzle will flow exactly how you want as well as the hose is loaded exactly how you want, it's your line OWN IT

